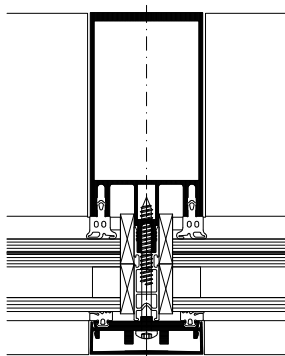


# WICTEC

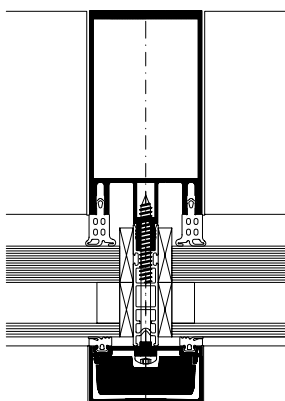
## Curtain wall systems

### Burglar resistance

Personal security and building protection – for your building you need a solution approach which can be accomplished with aluminium systems in a holistic and compatible way. This is achieved by the WICONA series for curtain walls, windows and doors. Each of them can be executed in burglar resistance, in combination with other additional functions. The various levels of resistance classes can be achieved with WICTEC stick curtain wall series without visual alterations of the constructions, with only a minimum of additional measures on the basis of the standard design.



WICTEC 50 RC2



WICTEC 50 RC3

**System test results/CE product pass in accordance with DIN EN 13830**

See classification of the respective WICTEC curtain wall series.



#### Technical performance:

##### Burglar resistance according to DIN EN 1627:

- The currently valid standard for burglar resistance, DIN EN 1627, has come into effect in European countries in 2011 and 2012. It replaced former national standards, like in Germany since September 2011 the standard DIN 1627. The classifications have been modified to classes RC1N to RC3, which are not identical with the former classes WK1 to WK3, as the test sequences have been changed.

##### Test results of the WICONA window series:

- The test results of the WICTEC curtain wall series have been assigned according to the new standard EN 1627. They can easily be specified and implemented without any additional measurement according to this new standard.

##### Burglar resistance according to DIN EN 1627 resp. DIN 1627/ classifications:

WICTEC 50	RC1N, RC2N, RC2, RC3
WICTEC 60	RC1N, RC2N, RC2, RC3
WICTEC 50 Passive house curtain wall	RC1N
WICTEC 50 Integrated pressure profile	RC1N
WICTEC 50A Add-on curtain wall	RC1N, RC2N, RC2