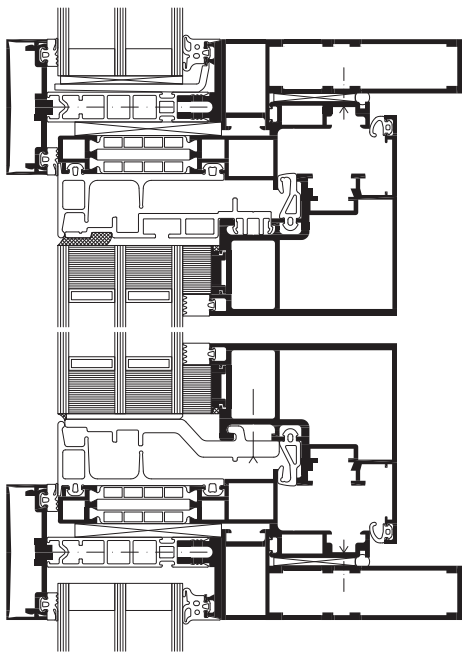


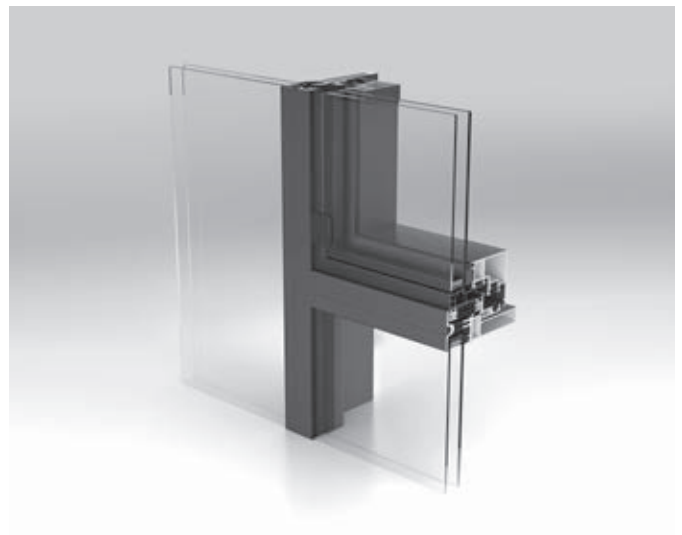
» WICLINE 70 SG Concealed structurally glazed sash

Maximising daylight with minimal sight lines. The outer frame of the WICLINE 70 SG window blends seamlessly into the mullion and transom profiles of the curtain wall, with only the glazing of the opening sash visible from the outside, blurring the boundaries between fixed glazing and opening elements. Specially designed mullion and transom profiles for WICTEC 50 system have been created to facilitate this integration, allowing opening elements to be combined with a conventional curtain wall.



System test results / CE product pass in accordance with EN 14351-1:2006+A2:2016

Air permeability:	Class 4
Water tightness:	E750
Resistance to wind load:	Class C4 / B4
Acoustic performance:	$R_w (C; C_{tr}) = 48 (-2; -5) \text{ dB}$
Mechanical strength:	Class 2
Repeated opening / closing:	Class 2 (10 000 cycles)
Impact resistance:	Class 1
Thermal transmittance:	up to $U_f = 1.0 \text{ W}/(\text{m}^2\text{K})$
Operating forces:	Class 1



Technical performance:

Profile technology:

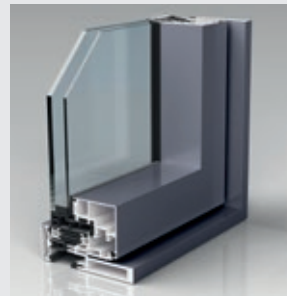
- Inward opening window
- Structurally glazed
- Concealed insertion frame
- Fully concealed hinges
- Infill thicknesses of 27-39 mm and 45-57 mm
- 3 design options for individual façades aesthetics
- Can be combined with WICTEC 50 stick system curtain wall

Hardware:

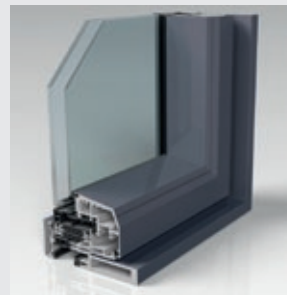
- Concealed hinges with integrated end position damping, max. opening angle 105°
- Optional opening limiter
- Maximum sash sizes (w x h) up to 1 000 mm x 2 500 mm
- Sash weight up to 200 kg

Opening types:

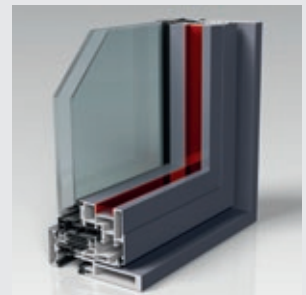
- Inward opening
 - Turn, Turn-Tilt, Tilt, Tilt-First (Hardware up to 160 kg)
 - Turn, Turn-Tilt (Hardware up to 200 kg)



Design with straight edge



Design with bevelled edge



Design with optional integrated LED