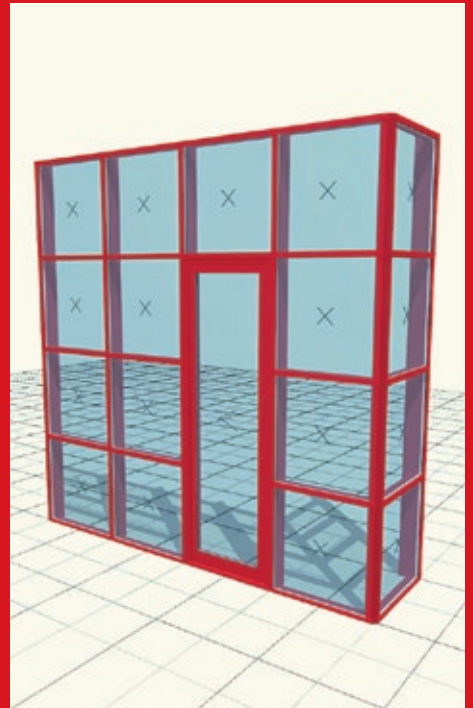


# WIC3D

## 3D sketching tool



# » WIC3D

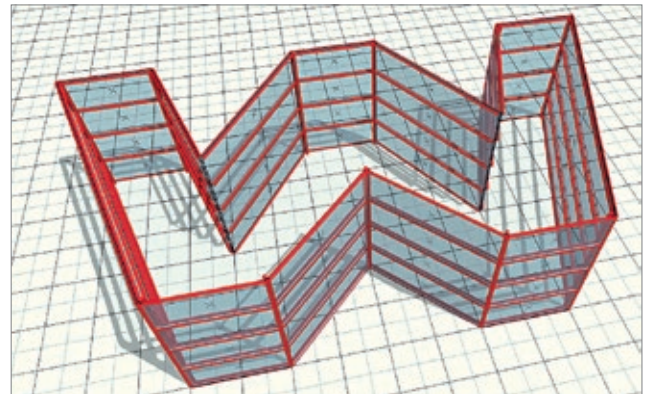
## Easy to use 3D sketching tool

**WIC3D is an innovative and simple sketching tool which has been specially designed for architects, specifiers and fabricators, saving time to produce 2D, 3D drawings and 3D renders for architectural aluminium façade designs.**

- **Create ...**

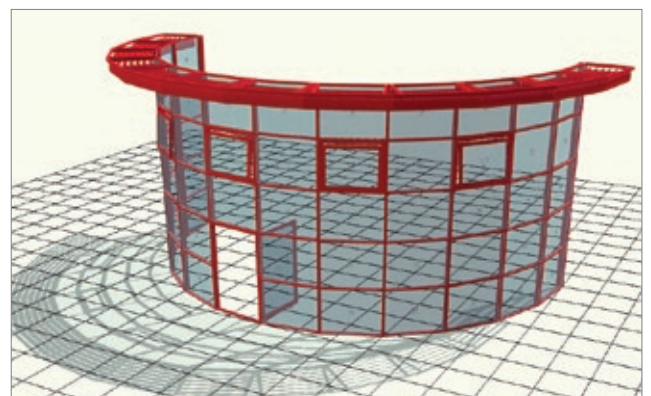
WIC3D has been developed following consultation with leading architects:

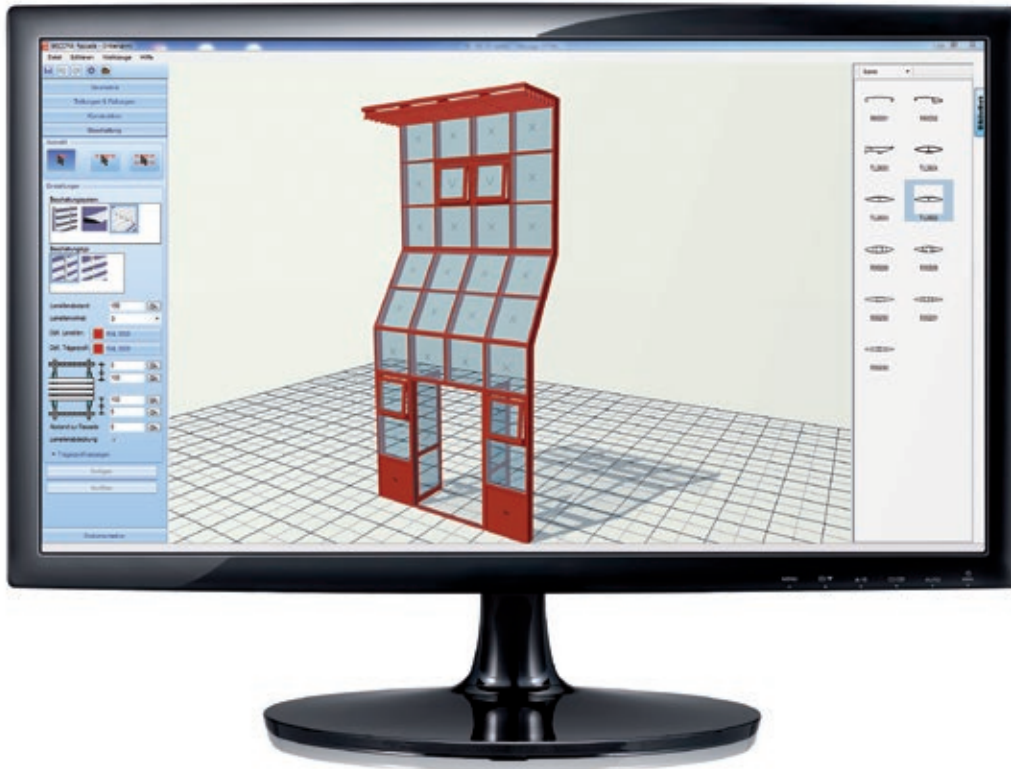
- Building designers are allowed to sketch out initial concepts and ideas quickly and easily incorporating WICONA WICTEC curtain walling, WICSOLAIRE solar shading system, WICLINE window and WICSTYLE door infills.
- Specifiers are able to create simple renders at the earliest project design stages.



- **Visualise ...**

- Architects have the capability to visualise a true-scale façade in Wicona products, improving accuracy and saving time.
- Specifiers are able to see how a façade will look, both internally and externally, so proportions, configurations and options such as opening vents (both open and closed) can be assessed and developed.

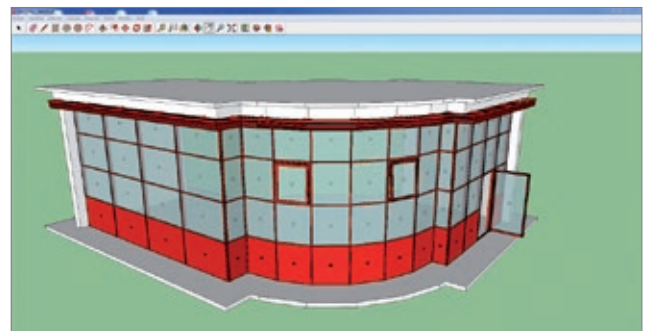
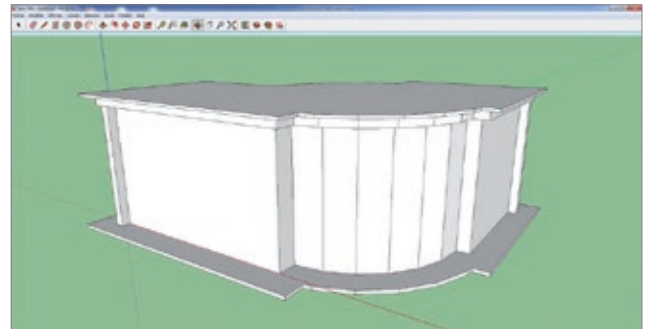




- **Communicate ...**

WIC3D is designed to link with architectural CAD systems so 2D and 3D design drawings can be imported and exported.

- A 3D construction created in Google SketchUp® can be imported into Wic3D to produce and show a 3D render where required in the 3D construction.
- A 2D elevation drawing can be imported as a template to create a 3D render; and also exported for use with all major CAD software, including AutoCAD®, Bentley®, Archicad® and ADT®.
- 3D renders can be exported for use with Google SketchUp® or in 3ds format to link with Autodesk 3ds Studio Max®.



**Recommended configuration :**

- Intel processor Core i5
- 4 Gb random access memory
- Separate graphic card with dedicated memory (E.g. Nvidia, GeForce or Quadro with a capacity of 2Gb).

## Austria

5201 Seekirchen  
☎ +43 6212 2000  
✉ info@wicona.at

## Benelux

2260 Oevel  
☎ +32 14 249999  
✉ info@wicona.be  
✉ info@wicona.nl

## Czech Republic

63900 Brno  
☎ +420 543 422030  
✉ info@wicona.cz

## Denmark

7430 Ikast  
☎ +45 7020 2048  
✉ info@wicona.dk

## España

08195 Sant Cugat del Vallès  
Barcelona  
☎ +34 902 222323  
✉ info@wicona.es

## Estonia / Latvia / Lithuania

11317, Tallinn  
☎ +37 2657 6635  
✉ info@wicona.lt

## France

02200 Courmelles  
☎ +33 3 23598200  
✉ info@wicona.fr

## Germany

89077 Ulm  
☎ +49 731 3984-0  
✉ info@wicona.de

## Hungary

1031 Budapest  
☎ +36 (1) 4533457  
✉ info@wicona.hu

## Ireland

Dublin 22, Eire  
☎ +353 1 4105766  
✉ info@wicona.ie

## Italia

20063 Cernusco sul Naviglio MI  
☎ +39 02 924291  
✉ info@wicona.it

## Norway

0283 Oslo  
☎ +47 22 422200  
✉ info@wicona.no

## Poland

03-828 Warszawa  
☎ +48 22 3308170  
✉ info@wicona.pl

## Russia

RUS-123995, Москва  
☎ +7 495 2077530  
✉ info@wicona.ru

## Sweden

352 45 Växjö  
☎ +46 470 787400  
✉ info@wicona.se

## Switzerland

5506 Mägenwil  
☎ +41 62 88741-41  
✉ info@wicona.ch

## United Kingdom

Wakefield WF5 9TG  
☎ +44 845 6028799  
✉ info@wicona.co.uk

## Africa / Asia / America

31037 Toulouse  
☎ +33 5 61312626  
✉ contact.wicona.international@wicona.com

## China

1208, China Resources Building, No.8  
Jianguomenbei Avenue, DongCheng District,  
Beijing 100005, P.R.C  
☎ +86 10 6059 5686 ext. 805  
✉ contact.wicona.international@wicona.com

## United Arab Emirates

Dubai  
☎ +971 4 887 00 96  
✉ contact.wicona.international@wicona.com

