

WICLINE 90SG

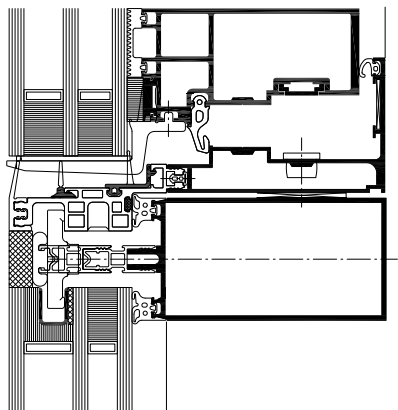
Structural glazing integration sash, Italian sash / parallel outward opening sash



As an attractive complement for curtain walls the integration sash WICLINE 90SG provides efficient ventilation, if requested also fully automated.

This all-glass sash with slim profile design for maximum transparency and finelined window structures. Construction depth 189 mm, interior width 55 mm

For an optimum thermal insulation WICLINE 90SG can be equipped with double or triple glazing. Using standard glass without glass step leads to an economy of cost and improved safety.



Technical performance:

Profile technology:

- All-glass sash with slim profile design for maximum transparency and finelined window structures. Construction depth 189 mm, interior width 55 mm
- ETA granted (European Technical Approval)
- Infill thickness up to 62 mm
- For double or triplex glass
- Technology without step glazing, leading to economy and simpler assembly
- Complete fittings from WICONA for manual or motor operation

Thermal insulation:

- U_i value until 1.1 W/(m²K)

Italian sash application:

- Sash weight until 180 kg
- Sash formats (w x h): until 1500 mm x 2500 mm or until 2000 mm x 1700 mm

Parallel outward sash application:

- Sash weight until 200 kg
- Sash formats (w x h): until 1500 mm x 3000 mm or until 2000 mm x 1500 mm

System test results / CE product pass in accordance with DIN EN 14351-1:2006+A1:2010

Air permeability:	Class 4
Watertightness:	E750
Resistance to wind load:	Class C4 / B4
Repeated opening / closing:	Class 2 (10,000 cycles)
Impact resistance:	Class 3
Load bearing capacity of safety devices:	Fulfilled
Approval	ETA: -11/0042 (European Technical Approval)
Quality assurance:	Certified according to ISO 9001:2008

