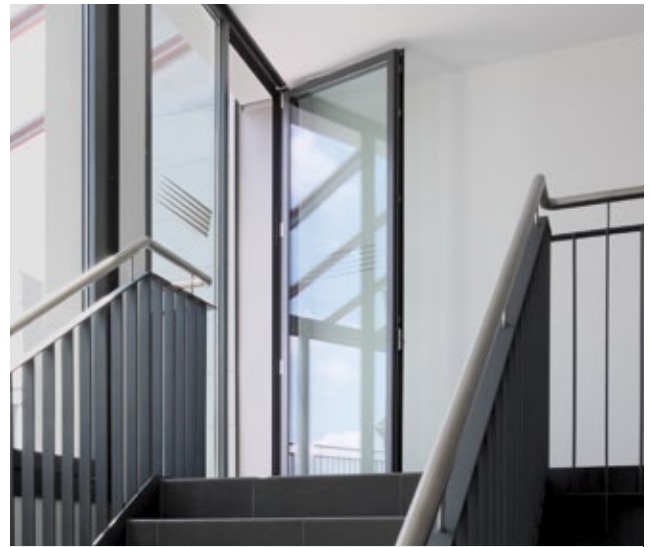
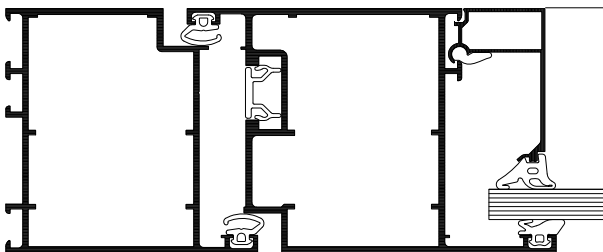
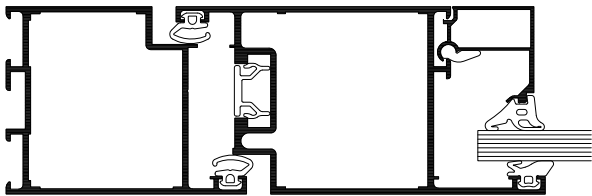


WICSTYLE 50N / 65N

Hinged doors, non-insulated

These aluminium systems are designed specially for use inside buildings or where thermal insulation is not a determining factor. The ranges also meet high standards with regard to functionality, durability and comfort, whilst providing good economy.



Technical performance:

Profile technology:

- High quality profiles with profile depth 50 mm or 65 mm
- For single and double leaf hinged doors with flush leaf profiles
- For inward and outward opening
- Option of glass-separating or adhesive sash bars
- Fanlights, lateral glazings fixed or opening in combination with WICLINE evo window series
- With mechanical floor gasket or stop gasket
- With butt-hinge or screwed hinge

Special for WICSTYLE 50N:

- Infill thickness 4 mm to 31 mm
- Leaf weight until 150 kg
- Max. leaf size (w x h): until 1300 mm x 2700 mm

Special for WICSTYLE 65N:

- Infill thickness 4 mm to 46 mm (flush leaf) or 8 mm to 57 mm (overlapping leaf)
- Leaf weight until 200 kg
- Max. leaf size (w x h): until 1450 mm x 2350 mm

Additional designs:

- WICSTYLE 65N also possible as smoke control door and with burglar resistance in resistance classes WK1 and WK2

