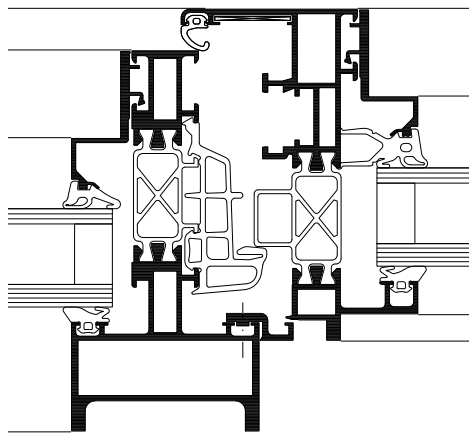


# WICLINE 77IK

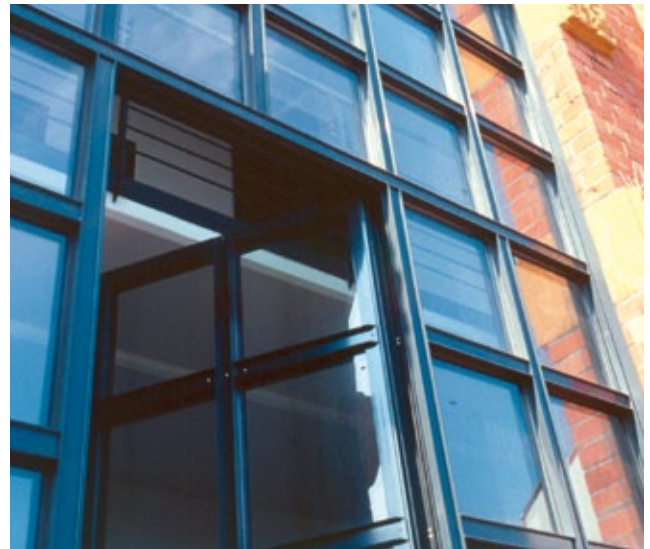
## Industrial design window

WICLINE 77IK industrial design is the ideal aluminium window for the renovation of historical buildings or to assign a technical look. The profile contour supports steel window design and individual adaptations like stick façade structures, crossbars in different alternatives or concealed sashes. Whether new build or renovation: WICLINE 77IK always makes it easy to fuse the various technical and design requirements.



**System test results / CE product pass in accordance with DIN EN 14351-1:2006+A1:2010**

Air permeability:	Class 4
Watertightness:	9A
Resistance to wind load:	Class C5/B5
Operating forces:	Class 1
Repeated opening / closing:	Class 2 (10,000 cycles)
Quality assurance:	Certified according to ISO 9001:2008



**Technical performance:**

**Profile technology:**

- High insulation multi-chamber system quality assured thermal insulator connection
- Patented corner and butt joint connection technology for high rigidity of frames and sashes
- Infill thickness up to 59 mm

**Thermal insulation:**

- $U_f$  values: until 1.4 W/(m<sup>2</sup>K)

**Sealing concept:**

- Special multi-chamber centre gasket for superior tightness and improved thermal insulation

**Fittings:**

- Concealed single-handed operated fittings, alternatively with:
  - Visible hinges
  - Concealed hinges
- Sash weight:
  - Up to 100 kg
- Sash sizes (w x h): 1300 mm x 1700 mm

**Additional options in industrial design:**

- Concealed sash
- Overlapping sash profile
- Double casement window
- Ribbon windows with split mullion
- Window units with stick curtain wall structure
- Crossbar windows with glass partitioning crossbars