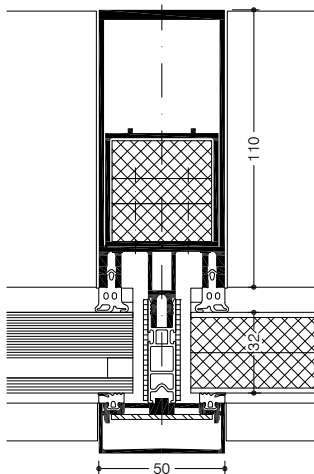


» WICTEC 50FP /
WICTEC 60FP
Fire protection curtain wall

WICTEC 50FP and WICTEC 60FP for fire protection façades in the G30 and F30 classes: no matter whether used in stairwells, extensions, hallways or glazed roofs – with WICTEC FP all types of façade and architectural concepts can be adapted to the necessary protection requirements.

The FP design is based on the WICTEC 50 and 60 standard façades, meaning that fire protection solutions can be integrated into standard solutions in a homogeneous and functional manner.



**System test results / CE product pass
in accordance with DIN EN 13830**

Air permeability:	Class AE
Watertightness:	RE 1200
Resistance to wind load:	2000 / -3200, safety 3000 / -4800 Pa
Impact resistance:	Class E5 / I5
German approval:	For vertical curtain wall and overhead glazing in F30 and G30
Quality assurance:	Certified according to ISO 9001:2008
Environmental management:	Certified according to ISO 14001

△ Approval in accordance with national regulations



Technical performance:

System width:	50 mm / 60 mm
Basic system:	WICTEC 50 / WICTEC 60
Fire protection classes:	G30 / F30
Infill dimensions:	Portrait format up to 1800 mm x 3000 mm Landscape format up to 2400 mm x 1400 mm
Height of façade:	up to 5000 mm
Polygon façade:	up to ± 5°
Infill thickness:	F30: 15 mm to 38 mm G30: 7 mm to 38 mm

System technology:

- For vertical and overhead glazing (fire protection up to 0° inclination)
- Slim sight lines: 50 mm or 60 mm
- Compatible and structurally identical with WICTEC 50 and WICTEC 60 standard systems
- Infills: glass or panel
- Extended freedom in design with big possible infill dimensions
- Suitable for interior and exterior application
- The WICONA fire protection parapet, in resistance class W90, offers the appropriate solution to prevent fire flashover with standard façades.
- Can also be combined with WICSTYLE 77FP fire protection doors and WICLINE 75FP fire protection windows

