

WICONA®

By  Hydro



» WICLINE 70 SG

The concealed structural glazing sash for maximum architectural demands and top user comfort.



WICLINE
window system



Ventilation



Maximum
daylight incidence

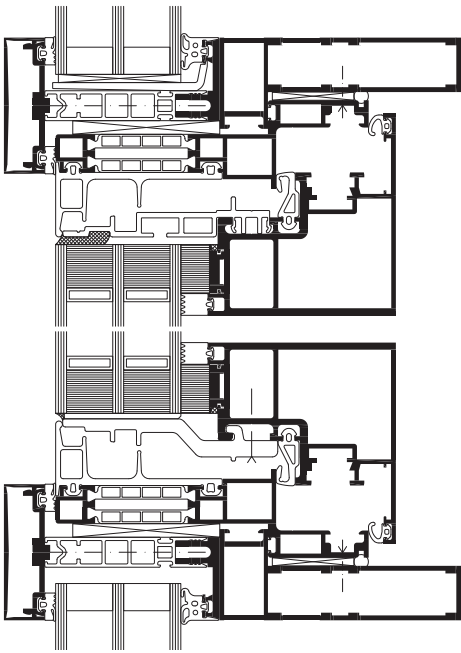
WICLINE 70 SG

Glass is one of the basic features of façade design in modern building architecture.

To meet these architectural demands, WICONA now offers a new concealed glass sash: the WICLINE 70 SG.



Tender text
www.wictip.com/WL70SG



System test results / CE product pass in accordance with DIN EN 14351-1:2006+A2:2016

Air permeability:	Class 4
Watertightness:	E750
Resistance to wind load:	Class C4/B4
Acoustic performance:	$R_w(C; C_{tr}) = 48 (-2; -5)$ dB
Mechanical strength:	Class 3
Repeated opening / closing:	Class 2 (10000 cycles)
Impact resistance:	Class 1
Operating forces:	Class 1

www.wicona.com



Design with straight edge

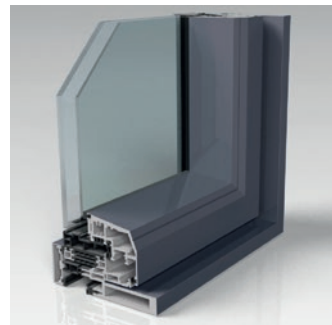
» WICLINE 70 SG Concealed Insertion Sash

The new insertion window without any visible insertion frame fits seamlessly into the façade look due to the concealed opening sash. From the outside, there is minimal differentiation between the opening sashes and the fixed lights. The inward opening insertion sash, WICLINE 70 SG, provides top user comfort thanks to efficient ventilation and increased glass area to maximise light transmission.

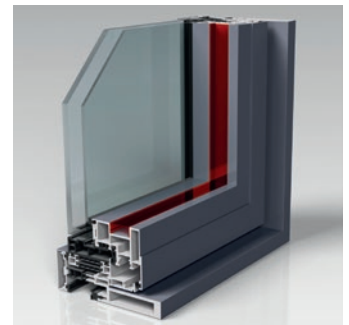
The specially developed mullion and transom profiles for integrating the opening sashes can be combined with the WICTEC 50 façade system.

Technical specification

- Inward opening insertion window
- Opening types:
 - Turn, Turn-Tilt, Tilt, Tilt-First (Hardware up to 160 kg)
 - Turn, Turn-Tilt (Hardware up to 200 kg)
- Structural glazing look
- Concealed insertion frame
- Sash size 1 000 mm x 2 500 mm
- Sash weight up to 200 kg
- Totally concealed hinges
- Infill widths of 27-39mm and 45-57 mm
- 3 design options for individual façade design
- Can be combined with WICTEC 50 stick façades



Design with bevelled edge



Design with optional integrated LED

WICONA

By  Hydro