

WICONA®
TECHNIK FÜR IDEEN



» Tailored safety and security solutions

ALUMINIUM PROFILE SYSTEMS

» Safety and security systems

Safety and security – the emphasis here is on the functions burglar and bullet resistance, fire safety and smoke control, doors on escape and emergency exit routes – aluminium profile systems of the WICONA brand are designed for the necessary safety and security requirements and in all respects comply with the statutory regulations.

WICONA places particular emphasis on combining design solutions with top product quality and consistently innovative ideas.



Safety and security – with this in mind, WICONA continually develops, tests and optimises its aluminium profile systems for façades, windows, lift-and-slide systems and doors at its own corporate technology centre.

All systems with their respective safety and security functions can be combined with each other and fulfil the requirements with basic constructions and appropriate additions.



Applications

Overview of safety and security systems 4

Burglar resistance 6

WICTEC façades 8

WICLINE windows 9

WICSTYLE doors 10

WICSLIDE 160 lifting sliding systems 11

Bullet resistance 12

WICTEC façades 13

WICLINE windows 13

WICSTYLE doors 13

Escape and rescue route technology 14

WICSTYLE door systems 15

Fire protection systems 16

WICTEC 50FP / WICTEC 60FP fire protection façades 18

WICLINE 75FP fire protection windows 19

WICSTYLE 77FP fire protection door 20

WICSTYLE FP90 fire protection door 21

Smoke control 22

WICSTYLE smoke control doors 23

» Applications

Overview of safety and security systems



	Burglar resistance	Bullet resistance	SHEV	Smoke control	Escape door	Fire protection
WICTEC façade systems						
WICTEC 50 / 60	•	•				•
WICTEC 50FP / 60FP						•
WICLINE window systems						
WICLINE 115 AFS	•					
WICLINE 95	•					
WICLINE 75 evo/TOP	•	•	•			•
WICLINE 75FP						•
WICLINE 65 evo	•	•	•			
WICSTYLE door systems						
WICSTYLE 65 evo	•	•			•	
WICSTYLE 75 evo	•	•			•	
WICSTYLE 65N	•			•	•	•
WICSTYLE 77FP	•			•	•	•
WICSTYLE FP90				•	•	•
WICSLIDE sliding systems						
WICSLIDE 160	•					



» Burglar-resistant façades, windows, doors and sliding systems

One of the primary functions of the building envelope functions of the building envelope include the protection of people and all assets within the building. For this reason, WICONA façades, windows, doors and sliding elements provide burglar resistance as an integral part of the system. The various

profile system applications fulfil current European standards in resistance classes from RC 1 N to RC 3*. Thanks to the WICONA Unisys principle, the series are identical to the standard applications and are adapted to the required resistance function by making small additions. This means that



elements of identical design can be specified throughout the building, at reasonable prices, where also other safety and security functions are also involved other safety and security functions are involved, such as fire safety, bullet resistance or other characteristics such as increased thermal or sound insulation.

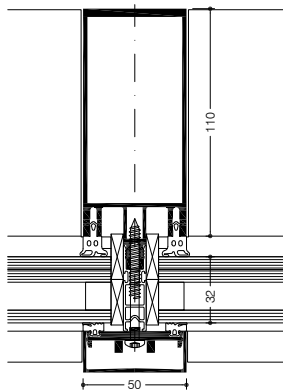
* For resistance classes, see the respective product series.
Solutions with higher classification are possible on request.



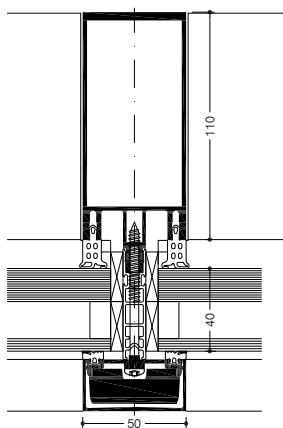
» WICTEC curtain wall systems burglar resistance

WICTEC curtain wall stick systems are the flexible and versatile components of the WICONA facade solutions. The wide range of profiles and the extensive accessory options offer maximum design freedom together with maximum process reliability from design to completion.

With slender face widths of 50 mm and 60 mm, this system construction achieves a particularly elegant facade. All WICTEC facade series fulfil the different degrees of burglar resistance without visual changes by just adding minor elements to the basic construction.



WICTEC 50 RC 2



WICTEC 50 RC 3



Technical performance:

Test results of the WICONA series:

- The test results of the WICTEC curtain wall series have been assigned according to the new standard EN 1627. They can easily be specified and implemented without any additional measurement according to this new standard.

Burglar resistance in accordance with EN 1627 resp. DIN 1627 / classifications:

WICTEC 50	RC1N, RC2N, RC2, RC3
WICTEC 60	RC1N, RC2N, RC2, RC3
WICTEC 50 Passive house curtain wall	RC1N
WICTEC 50 Integrated pressure profile	RC1N
WICTEC 50A Add-on curtain wall	RC1N, RC2N, RC2

System tests / CE product pass in accordance with DIN EN 13380 / National technical approvals:

Air permeability:	Class AE
Watertightness:	RE 1200
Resistance to wind load:	2000 / -3200, Safety 3000 / -4800 Pa
Sound insulation:	$R_w (C; C_{tr}) = 47 (-1; -4)$ dB
Impact resistance:	Class E5 / I5
TRAV:	Passed
Burglar resistance:	RC1N, RC2N, RC2, RC3
Bullet resistance:	FB4
National technical approval:	Mullion/transom connections and clamp connection (with screw-fastened pressure plates)
Quality management:	Certified to ISO 9001:2008
Environmental management:	Certified to ISO 14001

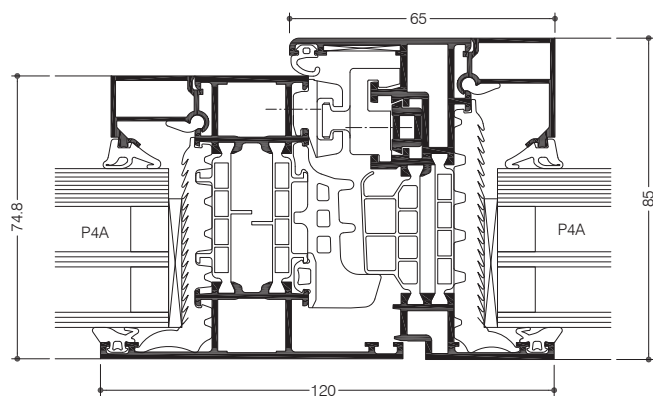
△ Approval in accordance with national regulations



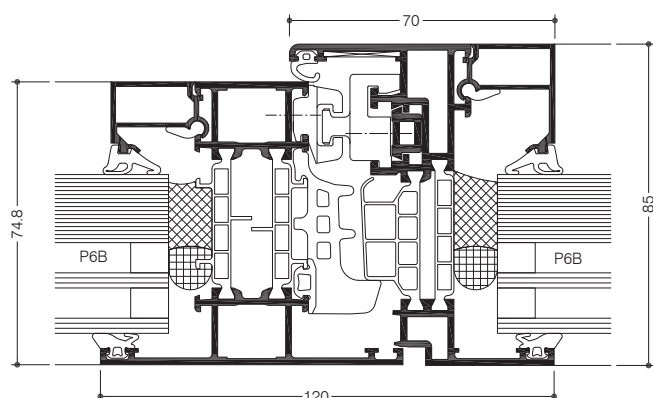
» WICLINE
window systems
burglar resistance

The sophisticated technology and the extensive range of profiles make the WICLINE evo aluminium window a perfect all-rounder with a broad range of applications. With a depth of 65 mm or 75 mm, WICLINE evo has outstanding structural characteristics and thermal insulation properties.

With these top performance characteristics, this aluminium window is ideally suited to all future architectural requirements. All WICLINE window series fulfil the different degrees of burglar resistance without visual changes by just adding minor elements to the basic construction.



WICLINE 75 evo RC 2



WICLINE 75 evo RC 3



Technical performance:

Test results of the WICONA window series:

- The WICLINE 65 evo and WICLINE 75 evo series with several variations have been tested according to the new standard EN 1627. They can easily be specified and implemented without any additional measurement according to this new standard.

Burglar resistance in accordance with EN 1627 resp. DIN 1627 / classifications:

WICLINE 65 evo / 75 evo Turn / turn-tilt / tilt / tilt-first / double casement	RC1N, RC2N, RC2, RC3
WICLINE 65 evo / 75 evo Fanlight	RC1N, RC2N, RC2, RC3
WICLINE 65 evo / 75 evo Concealed sash	RC1N, RC2N, RC2, RC3
WICLINE 65 evo / 75 evo Classic design	RC1N, RC2N, RC2, RC3
WICLINE 95 Turn/ Turn-tilt/ Tilt/ Tilt-first/ Fanlight	RC1N, RC2N, RC2, RC3
WICLINE 115 AFS Turn/ Turn-tilt/ Tilt/ Tilt-first/ fixed field	RC1N, RC2N, RC2, RC3

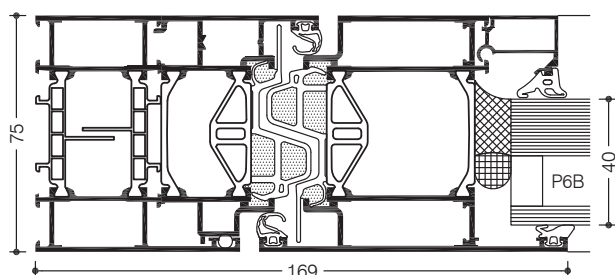
System tests / CE product pass in accordance with DIN EN 14351-1:2006+A1:2010:

Air permeability:	Class 4
Watertightness:	E900
Resistance to wind loads:	Class C5 / B5
Sound insulation:	$R_w (C; C_{tr}) = 47 (-1; -4)$ dB
Operating forces:	Class 1
Loadbearing capacity of safety devices:	Passed
Mechanical strength:	Class 4
Durability:	Class 3 (20 000 cycles)
Corrosion resistance of hardware:	Grade 5
Quality management:	Certified to ISO 9001:2008
Environmental management:	Certified to ISO 14001
TRAV:	Passed

» WICSTYLE door systems burglar resistance

With a flush depth of 65 mm or 75 mm, WICSTYLE evo offers a comprehensive range of applications fulfilling top requirements in terms of design, technology and performance. With its strong performance and wide range of applications, it fulfils all current and future architectural requirements for new build and refurbishment in an exemplary way.

All WICSTYLE door series fulfil the different degrees of burglar resistance without visual changes by just adding minor elements to the basic construction.



WICSTYLE 75 evo in RC3



Technical performance:

Test results of the WICONA door series:

- The new WICSTYLE 65 evo and WICSTYLE 75 evo door series with several variations have been tested according to the new standard DIN EN 1627. They can easily be specified and implemented without any additional measurement according to this new standard.

Burglar resistance in accordance with DIN EN 1627 resp. DIN 1627 / classifications:

WICSTYLE 65 evo/75 evo Hinged doors	RC1N, RC2N, RC2, RC3
WICSTYLE 65 evo/75 evo Classic Design	RC1N, RC2N, RC2, RC3
WICSTYLE 65N non-insulated	WK1, WK2

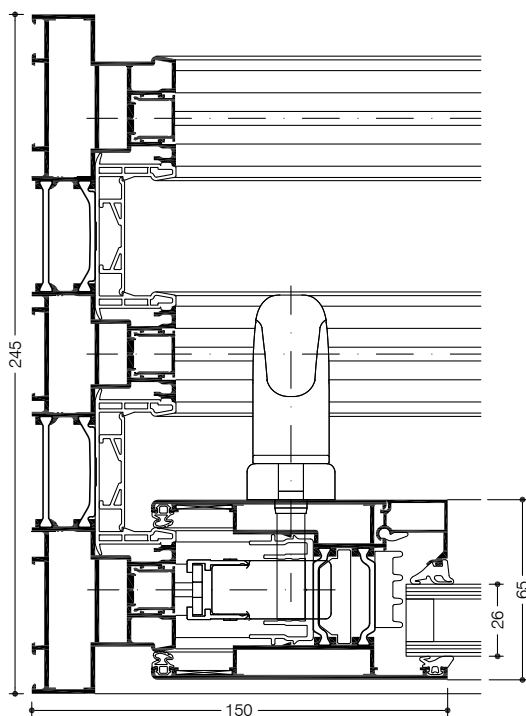
System tests / CE product pass in accordance with DIN EN 14351-1:

Air permeability:	Up to Class 4
Watertightness:	Up to 7A
Resistance to wind loads:	Class C2
Sound insulation:	R_w (C; C_{tr}) up to 43 (-2; -5) dB
Operating forces:	Class 2
Loadbearing capacity of safety devices:	Passed
Mechanical strength:	Class 3
Durability:	Up to Class 8 (1 000 000 cycles)
Impact resistance:	Class 1
Behaviour between different climates	Up to Class 2(e) 2(d)
Quality management:	Certified to ISO 9001:2008
Environmental management:	Certified to ISO 14001



» WICSLIDE 160
lifting sliding doors
burglar resistance

The WICSLIDE 160 lifting sliding system combines excellent thermal insulation with the highest functionality and design. Impressive leaf dimensions and enduring operation comfort are your guarantors for maximum customer satisfaction. With state-of-the-art technology and innovative advantages in fabrication, WICSLIDE 160 is a high-tech product that sets new standards.



System test results / CE product pass in accordance with DIN EN 14351-1:

Air permeability:	Class 4
Watertightness:	E750
Resistance to wind load:	Class C3
Acoustic performance:	$R_w (C; C_{tr}) = 43 (-1; -3) \text{ dB}$
Quality assurance:	Certified according to ISO 9001:2008
Environmental management:	Certified according to ISO 14001



Technical performance:

Profile technology:

- Improved hooking zone between the leaves for enhanced thermal insulation and tightness
- Infill thickness from 4 mm to 50 mm
- Construction depth 160 mm (double track) and 245 mm (triple track)
- Special frame profiles with multi function zone
- Barrier free threshold possible
- Enduring comfort operation due to optimised running carriage technology
- Hooking zone without visible screws
- Optional with fixed glazing or fixed sash
- Easy integration in WICTEC 50 and WICTEC 60 stick system curtain walling

Thermal insulation:

- U_w values: below 1.1 W/(m²K)

Hardware:

- Lifting sliding fittings, running carriage with integrated brush for permanent cleaning of the tracks
- Support device in the lowering of the leaf, resulting in reduced operation forces
- Leaf sizes (w x h): up to 3240 mm x 3400 mm
- Leaf weight up to 400 kg (lifting sliding)

Burglar resistance in accordance with DIN EN 1627 resp. DIN 1627 / classifications:

WICSLIDE 160

RC1N, RC2N, RC2

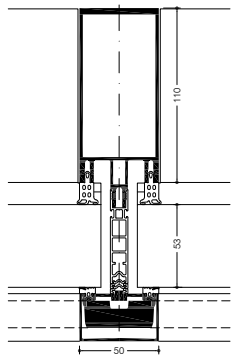


» Bullet resistance of façades, windows and doors

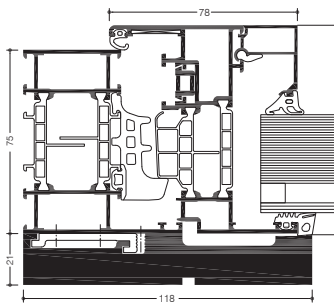




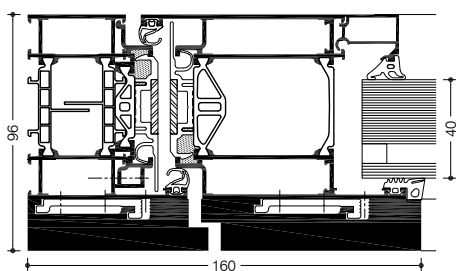
Banks, embassies, courts of law, public offices, police stations, retail shops – people and objects in these establishments must be reliably protected against potential attacks or acts of terror. With the bullet-resistant system solutions by WICONA it is possible to fulfil the exacting requirements of resistance classes FB4S and FB4NS in accordance with DIN EN 1522. Reliable bullet resistance is achieved by adding system components to the curtain wall, window and door series.



WICTEC 50 curtain wall in FB4



WICLINE 75 evo window in FB4



WICSTYLE 75 evo door in FB4

Technical performance:

Bullet resistance in accordance with DIN EN 1522:

- WICTEC curtain wall series, and the new WICLINE 65 evo / WICLINE 75 evo window series and WICSTYLE 65 / WICSTYLE 75 evo door series with simple system extensions were tested under this standard and successfully achieved certification in Classes FB4 S and FB4 NS.
- Bullet resistance to Class FB4 S and FB4 NS can be achieved for different opening types of ribbon windows and punched opening façade designs.
- The bullet-resistant version can be combined with burglar resistance to Classes RC1N, RC2N, RC2, RC3 in accordance with DIN EN 1627.

Combinable WICONA product series in bullet resistance Class FB4:

- Windows: WICLINE 65 evo / WICLINE 75 evo
- Doors: WICSTYLE 65 evo / WICSTYLE 75 evo
- Curtain wall stick system: WICTEC 50

Bullet resistance in accordance with DIN EN 1522 / classifications:

WICTEC 50 FB4 WICTEC 60 FB4 WICLINE 65 evo / 75 evo Turn / Turn-Tilt / Tilt / Tilt-First / Double casement	FB4S / FB4NS
WICSTYLE 65 evo / 75 evo Single action doors, single or double leaf, opening inwards or outwards	FB4S / FB4NS



» Escape and emergency exit door technology



European standards for escape door systems

In Europe, uniform standards apply to locks and hardware of doors on emergency exits routes. Escape door systems as specified by the new standards are subdivided into:



Emergency exit devices to DIN EN 179 and panic door devices to DIN EN 1125

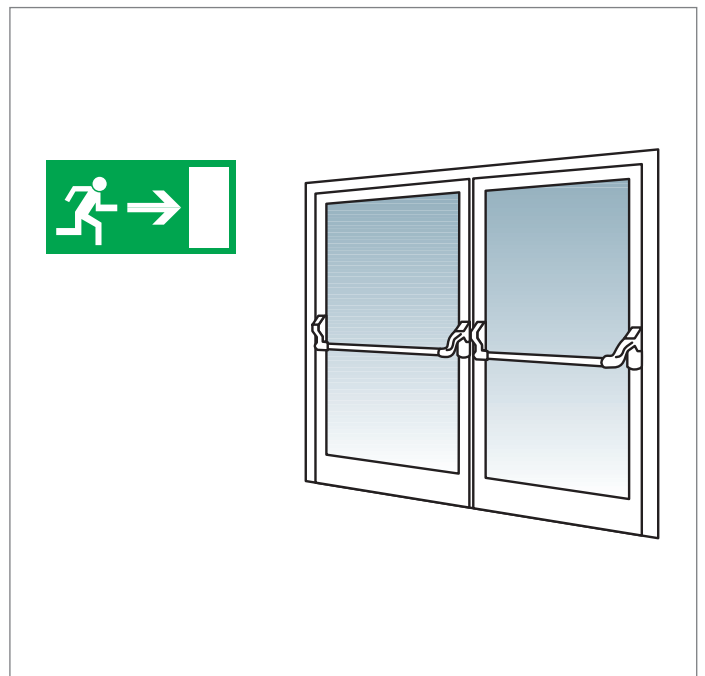
Both standards include the complete locking system. That means that only tested and marked hardware components may be used that have been tested together as part of the locking system and have the benefit of the respective test certificate. The top objective and main emphasis is to protect people not only against the risks of fire and/or smoke, but also in potential panic situations in everyday life. In addition to this main requirement, the WICSTYLE door systems also come with the option of making doors on escape and emergency exit routes ("panic doors") burglar resistant up to Class RC 3. WICONA achieves this without restricting other functions that may be required for the doors, such as resistance to wind load, air permeability or watertightness.

Emergency exits as per DIN EN 179

Emergency exits with hardware in accordance with DIN EN 179 are those in buildings which are not open to the general public and where visitors are familiar with the function of the escape doors. Such doors can, for example, include side exits in public buildings, which are used solely by authorised personnel. The specified fitting elements are levers or push pads.

Panic doors as per DIN EN 1125

Panic doors with hardware in accordance with DIN EN 1125 are used in public buildings where the visitors are not familiar with the function of the escape doors. They must be able to use these doors in an emergency situation without prior instruction. Examples are hospitals, schools, public administration buildings, airports and shopping centres. Mandatory fittings include handle bars or touch bars that are as wide as the door!



Technical details:

- In accordance with the requirements of EN 179 (escape route) or EN 1125 (panic version)
- Achievable with various WICONA door systems; therefore it is possible to specify a uniform door design for the building also where different functions are needed
- Single or double leaf versions
- Doors can be combined with burglar resistance up to RC3
- Doors can be upgraded to provide fire protection to Classes EI 30 / T 30 and EI 60 / T 60 and smoke control



» Fire protection curtain walls, windows, doors

Fire protection safety is one of the most critical technical characteristics in modern architecture. Top functionality is mandatory; individual design that matches the overall design concept is desirable. To achieve this, WICONA offers a comprehensive

product range including single and double WICSTYLE fire protection doors, WICLINE fire protection windows and WICTEC fire protection curtain walls. These components are fully compatible with the WICONA standard profile systems.

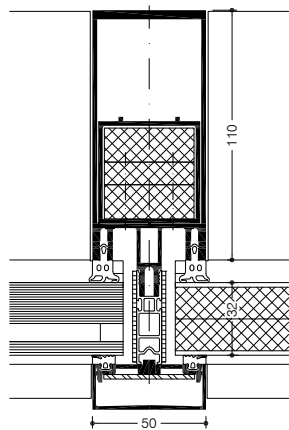




» WICTEC 50FP / WICTEC 60FP Fire protection curtain wall

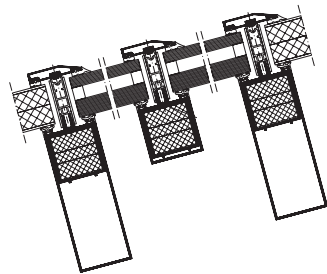
WICTEC 50FP and WICTEC 60FP for fire protection façades in the G30 and F30 classes: no matter whether used in stairwells, extensions, hallways or glazed roofs – with WICTEC FP all types of façade and architectural concepts can be adapted to the necessary protection requirements.

The FP design is based on the WICTEC 50 and 60 standard façades, meaning that fire protection solutions can be integrated into standard solutions in a homogeneous and functional manner.



Tested to EN

Overhead glazing
WICTEC 50FP / 60FP



Tested to DIN

System test results / CE product pass in accordance with DIN EN 13830

Air permeability:	Class AE
Watertightness:	RE 1200
Resistance to wind load:	2000 / -3200, safety 3000 / -4800 Pa
Impact resistance:	Class E5 / I5
German approval:	For vertical curtain wall and overhead glazing in F30 and G30
Quality assurance:	Certified according to ISO 9001:2008
Environmental management:	Certified according to ISO 14001

△ Approval in accordance with national regulations



Technical performance:

System width:	50 mm / 60 mm
Basic system:	WICTEC 50 / WICTEC 60
Fire protection classes:	G30 / F30
Infill dimensions:	Portrait format up to 1800 mm x 3000 mm Landscape format up to 2400 mm x 1400 mm
Height of façade:	up to 5000 mm
Polygon façade:	up to ± 5°
Infill thickness:	F30: 15 mm to 38 mm G30: 7 mm to 38 mm

System technology:

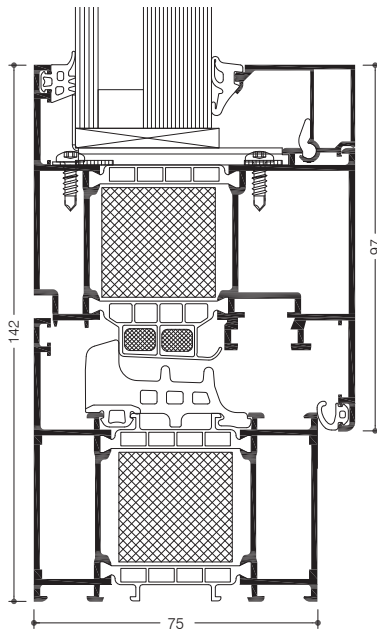
- For vertical and overhead glazing (fire protection up to 0° inclination)
- Slim sight lines: 50 mm or 60 mm
- Compatible and structurally identical with WICTEC 50 and WICTEC 60 standard systems
- Infills: glass or panel
- Extended freedom in design with big possible infill dimensions
- Suitable for interior and exterior application
- The WICONA fire protection parapet, in resistance class W90, offers the appropriate solution to prevent fire flashover with standard façades.
- Can also be combined with WICSTYLE 77FP fire protection doors and WICLINE 75FP fire protection windows



» WICLINE 75FP Fire protection window



With the new WICLINE 75FP fire protection window series, the WICONA fire protection programme is completed. The construction is 100 % based on a WICLINE 75 standard design and cannot be visually differentiated from this design. The self-closing openable fire protection glazing can be implemented as punch windows, windows with surrounds or integrated in a WICTEC 50FP fire protection stick curtain wall.



System test results / CE product pass in accordance with DIN EN 14351-1:2006+A1:2010

Air permeability:	Class 4
Watertightness:	E750
Resistance to wind load:	Class C4 / B4
Operating forces:	Class 2
Load bearing capacity of safety devices:	Fulfilled
Mechanical strength:	Class 4
Repeated opening / closing:	Class 2 (10000 cycles)
Impact resistance:	Class 3
Quality assurance:	Certified according to ISO 9001:2008
Environmental management:	Certified according to ISO 14001

△ Approval in accordance with national regulations



Technical performance:

Profile technology:

- CE marking according to DIN EN 16034 EI₂ 30-C₂S_a
- Execution in fire protection classes EI30 or EW30
- Patented corner and butt joint connection technology for high rigidity of frames and sashes
- Infill thickness up to 49 mm
- Optionally with integration frame for stick curtain walls WICTEC 50FP

Thermal insulation:

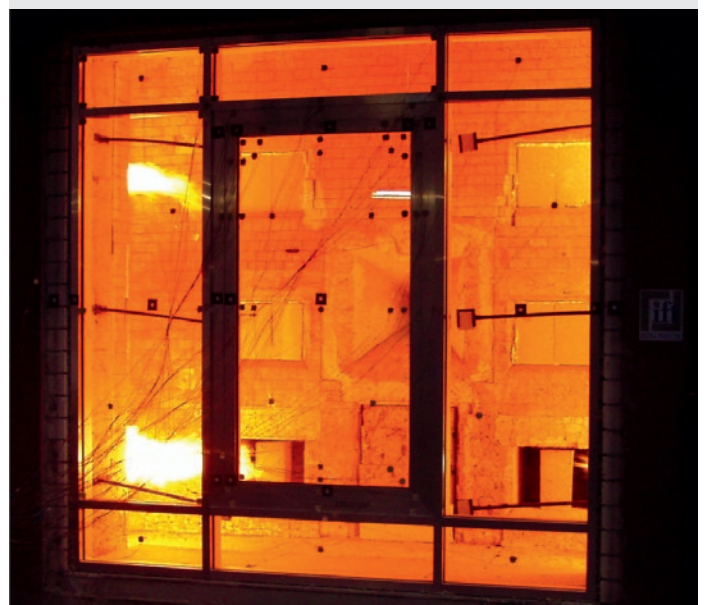
- U_f values: until 1.3 W/(m²K)

Sealing concept:

- Voluminous centre gasket with three installation methods:
 - Circumferential centre gasket, avoiding joints in the corner areas
 - Formed corners, avoiding adhesive in the joints
 - Corner vulcanised frames

Hardware:

- Heavy duty system fittings, with concealed hinges, integrated end position damping, opening angle max. 105°
- Sash weight:
 - up to 160 kg
- Sash sizes (w x h): 1300 mm x 2300 mm



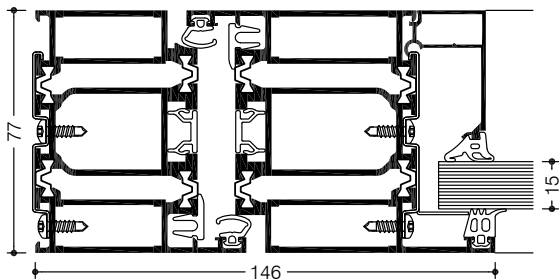
» WICSTYLE 77FP

Fire protection door

EI30/T30 and EI60/T60



This aluminium door in modular set-up fulfils the requirements of class EI30 and/or class T30/F30 for single and double-leaf doors without the need for fire protection inserts. Simply by adding these, class EI60 and/or T60/F60 are achieved. A full range of fanlight or fixed top or lateral glazings assure a comprehensive application range.



Technical performance:

Profile technology:

- Approved by building authorities
- CE marking according to DIN EN 16034 EI₂ 30-C₅S₂₀₀
- Execution in fire protection classes EI30/T30/F30 without fire protection inserts
- Execution in fire protection classes EI60/T60/F60 simply by adding fire protection inserts
- For single and double leaf hinged doors, inward and outward opening
- Fixed glazings, lateral lights and fanlights possible in many options
- Identical profile elevation as in the door series WICSTYLE 65 evo and WICSTYLE 75 evo, allowing for a unique design in a building project

Hardware:

- Butt hinge or screwed hinges in the same design as for WICSTYLE standard series, leading to a harmonised building design
- Extensive fittings for requirements such as panic functions, emergency exit seals, electric safety locks, electronic openers, revolving door drive with magnet and bolt contact
- Max. leaf sizes (w x h):
up to 1462 mm x 2990 mm (single leaf),
or 2943 mm x 2990 mm (double leaf)
- Max. leaf weight: up to 260 kg

System test results / CE product pass in accordance with DIN EN 14351-1:2006+A1:2010

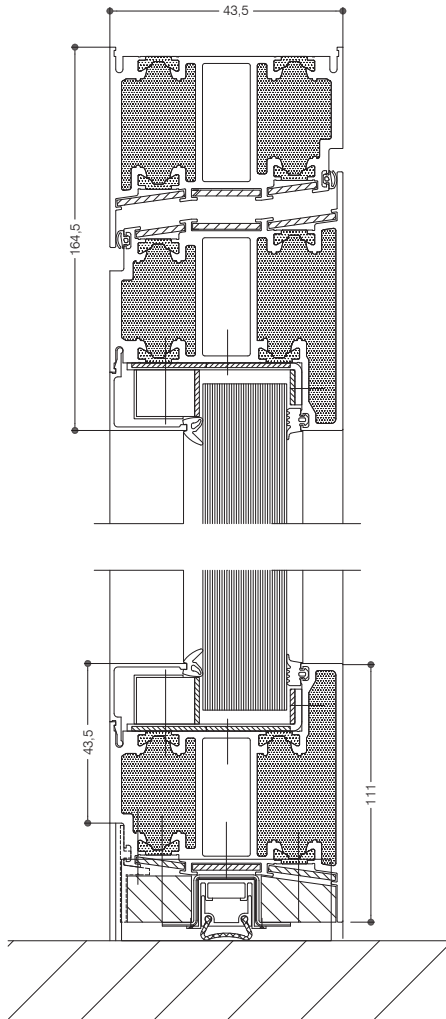
Air permeability:	Class 4
Watertightness:	Class 6A
Resistance to wind load:	Class C3 / B3
Burglar resistance:	RC1N, RC2N, RC2

△ Approval in accordance with national regulations



» WICSTYLE FP90
Fire protection door
T90/F90

WICSTYLE 90FP is delivered as a pre-assembled component and offers very high fire resistance of 90 minutes as a single or double-leaf hinged door. This is also available in combination with fixed glazing. The door is designed for internal use, opening inwards and outwards. In individual cases, outdoor usage is possible after consultation.



Hinged door, outward opening.
Special frame with surrounding leaf profile and lowering gasket.



Technical performance:

Profile technology:

- WICSTYLE 90FP is approved for the German market. For other countries the national regulations must be respected
- Pre-assembled fire protection system, doors are ready to install and include glass
- Execution in fire protection classes T90/F90
- For indoor application, inward and outward opening, and fixed glazing
- Fixed glazings, lateral lights and fanlights possible in many options
- Slim profile dimensions for filigree design
- Flush leaf with profile depth 100 mm
- Free choice for surface treatment
- Additional functions possible with large fitting portfolio



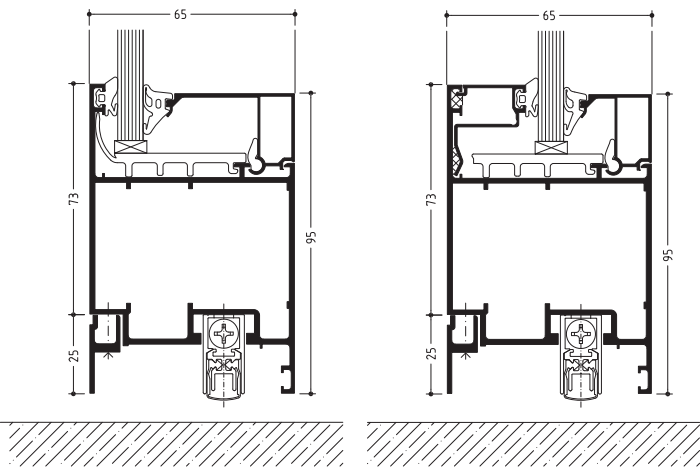
» Smoke control





WICSTYLE 65N RS smoke control doors

WICSTYLE 65N RS is an aluminium smoke control door with the same face widths as the standard and thermally insulated WICONA door series.

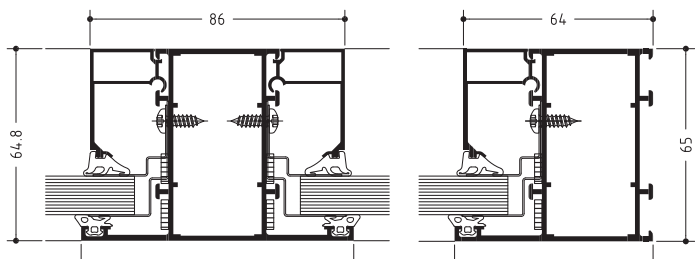


Technical performance:

- Flush door construction on both sides
- Smoke control doors RS1, single leaf, and RS2, double leaf, to DIN 18 095
- Types of opening: single action doors, single and double, opening inwards and outwards
- Numerous types of glass and infill panels
- WICONA glazing technology with serial glazing bars and continuous sealing strips inside and outside
- Mechanical floor seal or floor stop seal
- Free choice of surface treatment / paint finish
- Glass-separating or stick-on glazing bars
- With door hinges or surface-mounted hinges in aluminium or stainless steel
- Can be fitted with overhead door closer or concealed door closer (ITS)
- Many options for door hardware with and without panic function
- Panic functions as per DIN EN 1125 / 179

WICSTYLE 65N fire partition EW 30

These partitions are designed specifically for application inside buildings or where no thermal insulation is required. When factors such as safety inside a building are important, these thermally uninsulated fire partitions are the right choice.



Technical performance:

- Thermally uninsulated 65 mm deep profiles
- Tested as per DIN EN 1364
- Fire safety Class EW 30 can be achieved by simply fitting additional elements
- Visually identical to the standard WICSTYLE 65 N series
- Glass-separating and stick-on glazing bars are possible
- Infill thickness: 13 mm, 20 mm up to 24 mm
- Max. height 3,500 mm
- Length unlimited

Austria

5201 Seekirchen
☎ +43 6212 2000
✉ info@wicona.at

Benelux

3400 Landen
☎ +32 11 690316
✉ info@wicona.be
✉ info@wicona.nl

Croatia

43000 Bjelovar
☎ +385 43 22 25 46
✉ info@wicona.de

Czech Republic

619 00 Brno
☎ +420 602 745 407
✉ info@wicona.cz

Denmark

8240 Risskov
☎ +45 7020 2048
✉ wicona@wicona.dk

España

08195 Sant Cugat del Vallès
Barcelona
☎ +34 93 573 77 76
✉ wicona.es@wicona.com

Estonia / Latvia

75312 Rae vald Harjumaa
☎ +372 657 66 35
✉ info@wicona.ee

France

02200 Courmelles
☎ +33 3 23598200
✉ info@wicona.fr

Germany

89077 Ulm
☎ +49 731 3984-0
✉ info@wicona.de

Hungary

1031 Budapest
☎ +36 (1) 4533457
✉ info@wicona.hu

Ireland

Dublin 22
☎ +353 1 4105766
✉ info@wicona.ie

Italia

20063 Cernusco sul Naviglio MI
☎ +39 02 924291
✉ info@wicona.it

Lithuania / Latvia

02244 Vilnius
☎ +370 5 2102587
✉ info@wicona.lt

Norway

2007 Kjeller
☎ +47 22 42 22 00
✉ wicona@wicona.no

Poland

93-428 Łódź
☎ +48 42 683 63 73
✉ info@wicona.pl

Romania

031041 Bucharest
☎ +40 21 3260045
✉ info@wicona.de

Serbia

11070 Beograd
☎ +381 11 312 18 35
✉ info@wicona.de

Slovakia

82105 Bratislava
☎ +421 918 725 098
✉ info@wicona.sk

Slovenia

2201 Zg. Kungota
☎ +386 26 20 99 70
✉ info@wicona.de

Sweden

574 81 Vetlanda
☎ +46 470 78 74 00
✉ wicona@wicona.se

Switzerland

5506 Mägenwil
☎ +41 62 88741-41
✉ info@wicona.ch

United Kingdom

Wakefield WF5 9TG
☎ +44 1924 232323
✉ info.wiconauk@wicona.com

China

Beijing 100005, P.R.C
☎ +86 10 6059 5686 ext. 805
✉ contact.wicona.international@wicona.com

Singapore

608831 Singapore
☎ +65 6513 2126
✉ contact.wicona.international@wicona.com

United Arab Emirates

Dubai
☎ +971 4 887 00 96
✉ contact.wicona.international@wicona.com

Other countries

31037 Toulouse
☎ +33 5 61312626
✉ contact.wicona.international@wicona.com