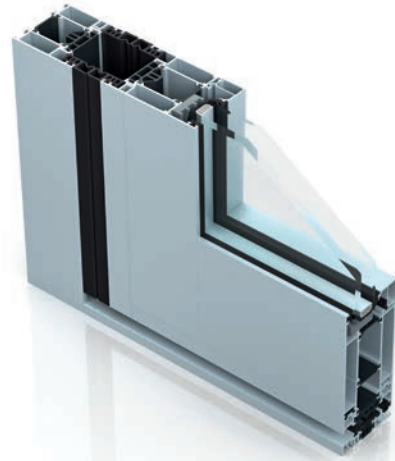
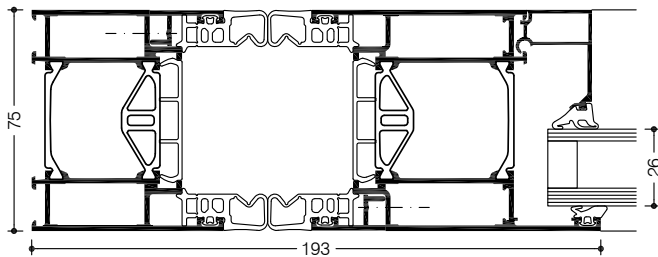


## » WICSTYLE 65 evo / 75 evo Finger protection door



The finger protection variation is based on the technical concept of the WICSTYLE evo aluminium door, with a 65 mm and 75 mm profile and is fully compatible with other solutions for ease of fabrication. The equipment and tools for manufacture remain the same, so that inventory does not increase unnecessarily and no time whatsoever is lost during production.

Finger protection is achieved using special seals and requires no additional elements for installation. Tools and manufacturing processes remain the same. As with all the versions in the WICSTYLE range, the door with an installation profile can be incorporated into the WICTEC façade and is also compatible with the WICLINE window system.



### System test results / CE product pass in accordance with DIN EN 14351-1

Air permeability:	Class 2
Watertightness:	Until 6A
Resistance to wind load:	Class C2
Operating forces:	Class 2
Load bearing capacity of safety devices:	Fulfilled
Mechanical strength:	Class 3
Repeated opening / closing:	Until class 7 (500 000 cycles)
Impact resistance:	Class 1
Behaviour between different climates:	Until class 2(e) 2(d)
Quality assurance:	Certified according to ISO 9001:2008
Environmental management:	Certified according to ISO 14001

Specific application data see ift product pass



### Technical performance:

#### Profile technology:

- Finger protection on the hinge side is effected only by special gaskets. No other additional parts are needed.
- The requirements of the standard DIN 18650 (safety distance > 25 mm) are met
- High insulation multi-chamber system in symmetric design, quality assured thermal insulator connection
- For single and double leaf hinged doors
- For inward and outward opening
- For glass or panels with infill thickness from 3 mm to 60 mm
- Various threshold profiles with or without thermal break, also barrier free
- Fanlights, lateral glazings fixed or opening in combination with WICLINE evo window series

#### Thermal insulation:

- $U_f$  values: from 1.6 to 1.8 W/(m<sup>2</sup>K), without foam inserts

#### Hardware:

- Butt hinge
- Screwed hinge
- Leaf sizes (w x h): 1400 mm x 2520 mm
- Max. leaf weight: until 200 kg

#### Additional designs:

- Double action doors
- Integration frame for stick façades